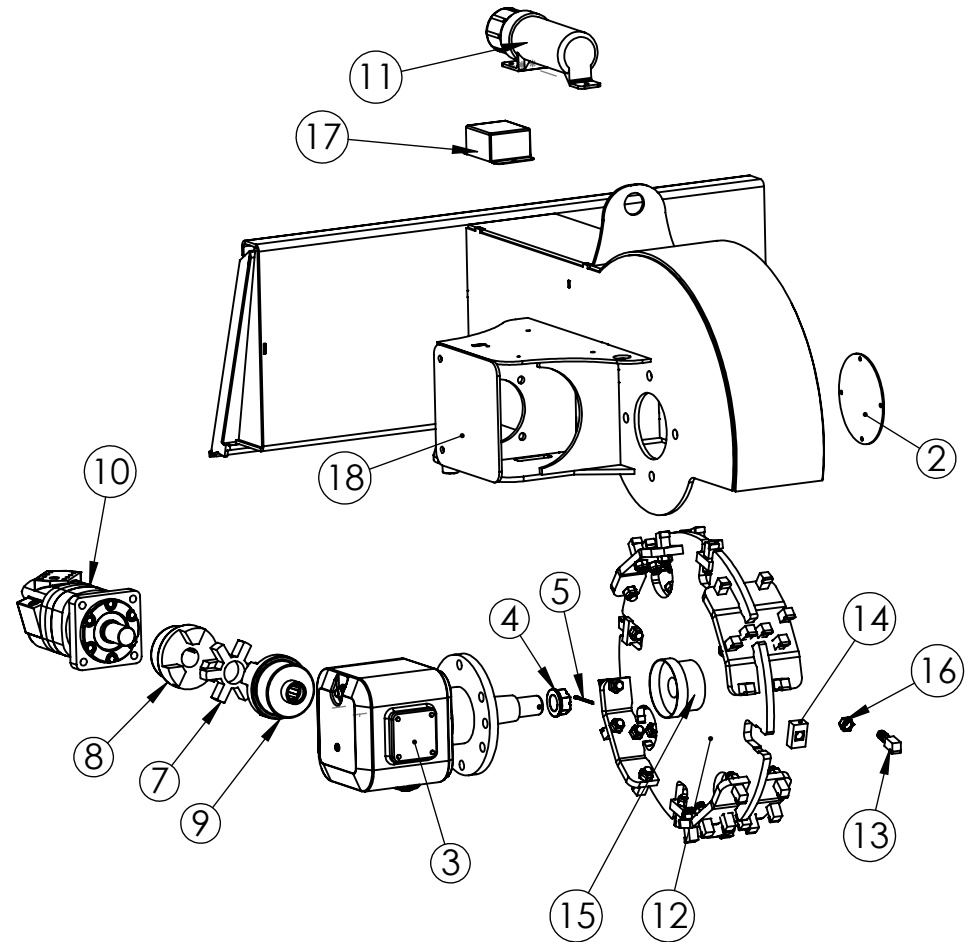


ITEM NO.	PART NUMBER	DESCRIPTION	QTY.
1	D002529	Rotor head	1
2	HGS50F-19		1
3	G2086	3 PH Gearbox	1
4	S1046	G2086 Gearbox Main Nut	1
5	S1047	G2086 Gearbox Main Pin	1
6	D001020	L225 flex coupler total assem with 6-spline insert	1
7	D001018	L225H Flex Hytrel Insert	1
8	D001024	Flex Hub L225 with 1.5" bore	1
9	D001623	New L225 flex hub with 6-splin bushing	1
10	D001175	Motor	1
11	Z96503	Manual Tube 3-1/2 Short	1
12	D002535	Rotor	1
13	S1000	5/8" threaded stump grinder tooth	40
14	D002924	S1000 tooth holder block (weld-in) 750 3P24-2	4
15	S1045	Weldable Hub	1
16	D001773	Tooth Nut	40
17	D001630	6-pack holder	1
18	HGS50F-17	Coupler shield	1



PROPRIETARY AND CONFIDENTIAL

THE INFORMATION CONTAINED IN THIS DRAWING IS THE SOLE PROPERTY OF MTB MFG INC. ANY REPRODUCTION IN PART OR AS A WHOLE WITHOUT THE WRITTEN PERMISSION OF MTB MFG INC IS PROHIBITED.



Description 20 - 42 GPM Christmas Tree stump grinder

Weight lbs.

DATE
1/8/2015

DWG. NO.

REV
A

DO NOT SCALE DRAWING

SCALE: 1:50 SHEET 1 OF 1

HGS50F